



COMMUNITY HEALTH NEEDS ASSESSMENT

FY 2023-2025

Essentia Health – St. Mary’s- Detroit Lakes



Essentia Health

Essentia Health Detroit Lakes

1027 Washington Ave, Detroit Lakes, MN 56501

Service Area Population: 9,197



366 individuals completed the survey



76 individuals participated in listening sessions



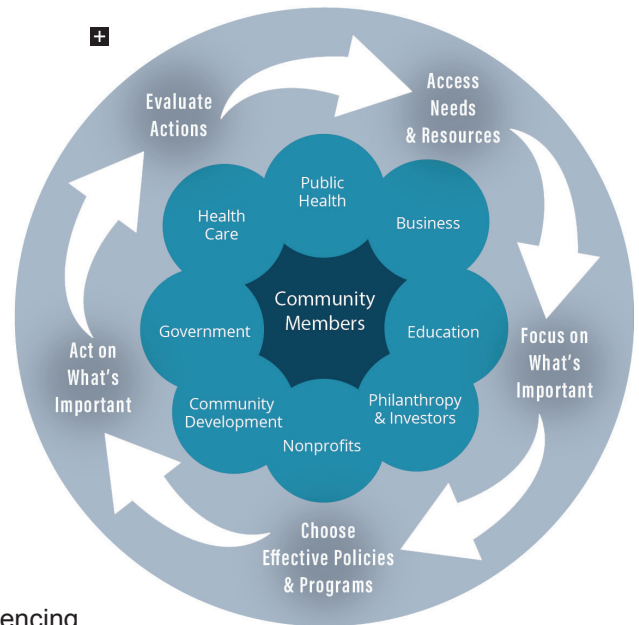
3 community listening sessions

GUIDING PRINCIPLES

1. Collaborate towards solutions with multiple stakeholders (e.g. schools, worksites, medical centers, public health) to improve community health.
2. Build trust through collaboration with community members experiencing health disparities.
3. Prioritize sustainable evidence-based efforts around the greatest community good.
4. Create clear, specific, realistic, and action-oriented goals to improve priority health indicators.
5. Prioritize strategies that advance health equity, address structural barriers, or reduce health disparities

PROCESS

Work Together



Communicate

Youth Mental Well-being	Substance Use	Access to Child Care
<p>Support the CornerStone Community and Youth Center to provide a safe place, empower youth, and engage caring adults with youth in the community.</p> <p>Support positive messaging, activities and healthy environments with the Positive Community Norms grant in Frazee-Vergas schools.</p>	<p>Support youth prevention with the Positive Community Norms project in Frazee-Vergas schools.</p> <p>Improve data collection and reporting through overdose detection mapping.</p> <p>Expand education and access to recovery services and harm reduction supplies.</p>	<p>Support expansion of new childcare facilities.</p> <p>Support implementation of childcare workforce career ladders and pathways in schools.</p> <p>Support childcare provider recognition efforts to improve awareness, and appreciation for childcare providers.</p>

The full report can be found at EssentiaHealth.org/about/chna

For questions or comments, please contact chna.comments@essentiahealth.org



Essentia Health

TABLE OF CONTENTS

Acknowledgements	3
Steering Committee Members	3
Introduction	4
Essentia Health Description	4
Community Health Needs Assessment Overview	4
Hospital Description and Service Area	5
Evaluation of 2019-2021 Implementation Plan	8
Process and Timeline	10
Process	10
Guiding Principles	10
Timeline	10
Data Collection and Analysis	11
Prioritization Process	12
Needs Not Addressed in the CHNA	12
Community Input on Prioritized Needs	12
Key Findings: Mental Wellbeing	13
Key Findings: Substance Use Disorder	14
Key Findings: Childcare Access	15
Implementation Plan Design	16
Conclusion	20

ACKNOWLEDGEMENTS

This report is based on a collaborative process with leadership from the following community members and organizations. Essentia Health would like to express our gratitude to the many individuals who contributed to planning, development and analysis of community health needs. We would like to thank these partners for offering their time and valuable insights to analyze and prioritize data, develop implementation plans and provide knowledge and expertise during this process.

Steering Committee Members:

- Karen Pifher, West Community Health Program Manager, Essentia Health
- Kristin Bausman, Public Health Supervisor, Becker County
- Janice Haverkamp, Director of Administration at Mahube/OTWA Community Action
- Becker County Energize members: people working together to create a healthier community (see appendix).

Community health needs assessment and implementation plan approved and adopted by the West Market board of directors on May 4, 2022.

INTRODUCTION

Essentia Health Description

Essentia Health is a nonprofit, integrated health system caring for patients in Minnesota, Wisconsin and North Dakota. Essentia Health is called to make a healthy difference in people's lives. To fulfill that mission, we seek opportunities to both enhance the care that we provide and improve health within our communities.

Community Health Needs Assessment Overview

Every three years, each Essentia Health hospital conducts a community health needs assessment (CHNA) to systematically identify, analyze and prioritize community health needs. The process is conducted in collaboration with many community partners including other health care systems, local public health departments and organizations or individuals that represent the broad interests in the community, including members of the medically underserved, low-income and higher health risk populations. Once the priority health needs are identified, Essentia Health works with partners to design an implementation strategy to leverage existing community strengths and resources available to improve community health.

Essentia Health is called to make a healthy difference in people's lives.

Caring for Our Community

Our commitment to our community's health and wellness goes well beyond the work of the community health needs assessments. Through contributions of over \$1.5 million annually to numerous community organizations, we're working together with our communities to improve the health and vitality of our neighborhoods. In addition, we're proud to say our employees donated more than 10,000 hours of their time and talents to a variety of programs and outreach efforts during the last year. Our community investments are designed to promote better health, help reduce inequities in our communities and improve access to health care.

HOSPITAL DESCRIPTION AND SERVICE AREA

Essentia Health St. Mary's is an 87-bed acute care facility in Detroit Lakes, Minnesota. The hospital has been providing health care to the community since 1886. Essentia Health St. Mary's-Detroit Lakes retains its Benedictine alignment and Catholic heritage, which began in 1939. We provide both primary and select secondary patient services, including a 12-bed women's unit with four birthing rooms, three operating rooms and full imaging and laboratory services. Outpatient and

Urgent Care services are provided in our new clinic adjacent to the hospital. Additional satellite clinics are in Pelican Rapids, Park Rapids, Menahga, Frazee, Mahnomen and Lake Park. St. Mary's Therapy Center offers physical, occupational and speech therapy services to all ages and includes a pediatric and outpatient gym, kitchen and sleep center. In providing the full spectrum of care, Essentia Health St. Mary's also has home health, senior living and assisted living, as well as transitional and long-term care services in a close-knit community. Essentia Health St. Mary's has a Level III Trauma designation, is a Primary Stroke Center hospital and has been awarded the Gold Seal of Approval by JCAHO for demonstrated commitment to standards of performance.

Essentia Health St. Mary's serves all of Becker County, and portions of the White Earth Indian Reservation, Ottertail, Hubbard and Mahnomen counties. The service area is defined by the ZIP codes that represent 80% of hospital admissions. Townships served include Detroit Lakes (56501), Frazee (56544), Park Rapids (56470), Mahnomen (56557), Pelican Rapids (56572), Waubun (56589), Lake Park (56554), Ogema (56569), Menahga (56464), Audubon (56511) and Ponsford (56575). Existing health care facilities within the region include hospitals in Perham, Fargo/Moorhead and Fergus Falls. White Earth Indian Reservation provides Indian Health Services and Tribal Health programs. There are multiple other health agencies that support the continuum of care in the service area.

Essentia Health at a Glance



DEMOGRAPHICS & SOCIOECONOMIC FACTORS

Table A. Overall Demographics (2018-2019)

Total Population	Becker County	Detroit Lakes	Minnesota
Population	34,011 33,375	9,197 9,060	5,639,632 5,611,179
Population under 5 years	6.4% 6.5%	7.1% 7.8%	6.2% 6.5%
Population under 18 years	22.4% 24.6%	22.1% 21.9%	23.1% 23.9%
Population 65 years and over	20.2% 19.1%	21.6% 22.8%	16.3% 14.4%
Population Characteristics			
Veterans	10.3% 11.7%	8.2% 11.0%	6.4% 6.8%
Speak a language other than English	3.0% 3.9%	2.9% 4.7%	12.3% 12.2%
With health insurance coverage	93.7% 90.8%	96.2% 92.4%	95.1% 95.6%
Poverty			
Median household income	\$60,284 \$54,115	\$49,173 \$37,103	\$74,593 \$70,315
People of all ages living in poverty	11.0% 12.8%	14.2% 19.0%	9.0% 9.6%
People under 18 years living in poverty	15.8% 17.4%	24.0% 27.3%	11.2% 11.7%
Employment Status			
Unemployment rate	2.3% 2.4%	2.1% 2.1%	3.2% 3.4%
Educational Attainment			
Population ages 25+ with high school graduation or higher	93.1% 92.6%	93.5% 92.5%	93.6% 93.4%
Population ages 25+ with bachelor's degree or higher	25.0% 23.7%	30.2% 28.9%	36.1% 34.2%
Housing			
Percent of owner-occupied homes	78.5% 79.0%	74.0% 71.8%	71.9% 71.5%
Population spending more than 30% of income on rent	42.1% 42.4%	51.5% 50.0%	44.0% 46.2%
Transportation			
Households with no motor vehicle available	5.1% 6.0%	8.9% 11.9%	6.6% 6.8%
<i>Source: U.S. Census Bureau American Community Survey</i>			
BLACK = 2019 ACS 5-Year Estimates data GRAY = 2018 ACS 5-Year Estimates data			

Table B. Race/Ethnicity Distribution (2018-2019)

Race Distribution		
Race	Detroit Lakes, MN	Percent
Total population	9,197 9,134	100% 100%
One race	8,856 8,737	96.3% 95.7%
White	8,333 8,214	90.6% 89.9%
Black or African American	89 132	1.0% 1.4%
American Indian and Alaska Native	311 266	3.4% 2.9%
Asian	123 125	1.3% 1.4%
Native Hawaiian/Pacific Islander	0 0	0.0% 0.0%
Other race	0 0	0.0% 0.0%
Two or more races	341 397	3.7% 4.3%
Hispanic or Latino	93 178	1.0% 1.9%
<i>Source: U.S. Census Bureau 2018-2019, American Community Survey</i>		
BLACK = 2019 ACS 5-Year Estimates data GRAY = 2018 ACS 5-Year Estimates data		

Becker County is primarily a rural community located in northwestern Minnesota, with a total population of 34,011. Detroit Lakes is the largest city in the county, with an increasing population of 9,197. Despite the increase in total population for the county and city, the age distribution for the population under 18 years old is decreasing. The county's population 65 years and older is steadily increasing. Detroit Lakes has a predominantly white population, accounting for 90.6% of the county's total population. There is a significant income disparity within Becker County and the greatest distinction is with youth at 24% below the poverty line in Detroit Lakes vs. the state average of 11%. As the community continues to grow, there is a rising diverse population, specifically in youth. The region's relatively rural nature makes transportation and isolation two barriers to accessing care, especially for the older population 65 years and older and people with disabilities of Becker County.

EVALUATION OF 2019-2021 IMPLEMENTATION PLAN

Don't Blow It: Anti-Vaping Campaign

Essentia Health and the American Lung Association developed a video and toolkit for use by teachers and community groups to educate students and the public about the dangers of vaping. The 10-minute video utilizes a peer-to-peer education model by featuring only youth voices. The video has been viewed more than 8,000 times since Oct. 1, 2020. To evaluate impact of the campaign, pre- and post-surveys were completed by 748 high school students. The survey shows a decrease in the percent of students who would be likely to try an e-cigarette after completing the program. The video and toolkit have been used in eighth to 12th grade classrooms across all Essentia Health markets. The materials are publicly available on Essentia Health's website: www.essentiahealth.org/dontblowitteacherguide/.

Mental Health First Aid

Essentia Health transitioned to offering Mental Health First Aid (MHFA) virtually to both Essentia Health colleagues and community members in 2020. Just as CPR teaches people how to assist an individual having a heart attack, MHFA teaches people to assist someone experiencing a crisis related to mental health or substance use until professional health is obtained. Since June 2019, 557 people have attended the eight-hour training program, including 142 Essentia Health colleagues. After the training, 99% of participants reported feeling confident that they could reach out to someone who may be experiencing a mental health crisis.

Resourceful

In April 2020, Essentia Health expanded a pilot to identify and connect patients with health-related social needs to community resources. All primary care and pediatric patients are given the option to complete a screening for social needs including food insecurity, transportation and financial strain. Over 2,000 patients have been connected to more than 80 different community partner organizations. We launched a new partnership with FindHelp.org to create a community resource guide and referral network (www.WeAreResourceful.org). The goal of this project is to create a more connected community with improved coordination between and among health and social service providers.

EVALUATION OF 2019-2021 IMPLEMENTATION PLAN: HOSPITAL SPECIFIC

Mental Well-being

Essentia Health led focus groups with 40 youth and more than 70 adults from the community to better understand why youth were experiencing high rates of depression/hopelessness and how we could make an impact. Strategies were then implemented including a new youth center, a new space for outdoor movies, new Frisbee golf course, art programs for youth and a community art mural. Also, the Kinship program was expanded, and new youth activities and volunteer opportunities were created during the year. Essentia Health invested \$41,500 in programs that impact youth mental well-being. Over the course of the project, there was an improvement of 7% of eighth grade students reporting positive mental well-being and a 9% increase of students reporting that adults care about them in the Frazee-Vergas Schools, according to the 2019 Minnesota Student Survey.

Substance Use

Essentia Health leveraged a grant from the Bureau of Justice for \$635,000, which led to several developments in 2021, including the launch of the Becker County Jail Diversion Program, development of a recovery house that served 16 people and the expansion of the Father Project that served 42 families. In addition, support was provided to the Frazee-Vergas Schools to help write a grant to implement a positive community norms program. The \$732,000 grant was awarded to the school and Essentia Health will continue to support this effort.

Childcare

In 2019, childcare providers were gathered to understand the underlying issues causing shortages of childcare in the community. As a result, funding was allocated to support localized consistent training at no cost to the provider, which supported 28 childcare providers in 2020. Early in the COVID-19 pandemic, Essentia Health allocated and distributed over \$2,000 worth of supplies (cleaning products, food, etc.) and engaged volunteers to deliver the supplies to help keep childcare providers open during this challenging time. In addition, \$5,000 was donated to support scholarships for youth to attend preschool at Lake Park Audubon.

PROCESS AND TIMELINE

Process

Essentia Health utilized the County Health Rankings and Roadmaps action cycle as a pathway for conducting the assessment. This systematic process involved assessing needs and resources, focusing on what's important, choosing effective policies and programs, acting on what's important and evaluating actions. Community members were at the center of each step, with a focus on working together and communicating across sectors.

To develop the implementation plan, we utilized a Results Based Accountability (RBA) framework. RBA uses a data-driven, decision-making process to help communities and organizations get beyond talking about problems to taking action to solve problems.

Community members and partners were actively involved, not just in setting priorities, but also in designing solutions.



Guiding Principles



Collaborate towards solutions with multiple stakeholders (examples: schools, worksites, medical centers and public health) to improve community health.



Build trust through collaboration with community members.



Prioritize sustainable, evidence-based efforts around the greatest community good.



Create clear, specific, realistic and action-oriented goals to improve health outcomes.



Prioritize strategies that advance health equity, address structural barriers or reduce health disparities.

Timeline

From March 2021 to November 2021, Essentia Health and partners completed the community health needs assessment. The implementation plan was developed December 2021 to April 2022.

DATA COLLECTION AND ANALYSIS

Becker County Energize met to discuss the types of data to include in the assessment, analyze the data and finalize the top priorities. A community stakeholder survey was developed in partnership with Sanford and Public Health for the Essentia Health West Market based on best practices around understanding root causes and social determinants of health. The survey was distributed by the Becker County Energize email network and on social media in July 2021. The survey received 366 responses. The survey respondents were 86% female, included diverse age ranges, were 98% heterosexual, 74% married, 87% homeowners, were primarily middle income and 86% identified as Caucasian. Other data sources used in the assessment included:

Data Source	Years	Geography
County Health Rankings and Roadmaps	2019, 2020, 2021	Becker County
Minnesota Student Survey	2016, 2019	Becker County
First Children's Finance Report (Childcare)	2020	Becker County

Three listening sessions were held with 76 total attendees (representing over 27 organizations). Participants reviewed the data, discussed the top priorities and resources available to address the community health needs. One of the listening sessions was held at Lakeland Mental Health Center with nine people experiencing mental health challenges to better understand their perspectives. One of the listening sessions was held with four childcare providers in White Earth to discuss well-being of youth and families. The other session was held virtually with a more general discussion on needs and resources.



3 community listening sessions



76 individuals participated in a community listening session.



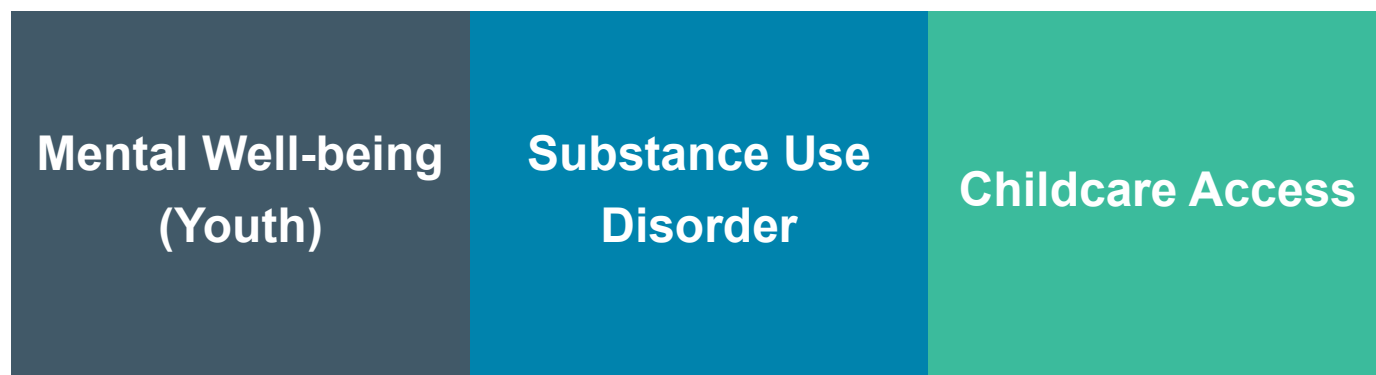
366 individuals completed the community health survey.

PRIORITIZATION PROCESS

After reviewing the secondary data and community input data, the CHNA Steering Committee members developed the following criteria to prioritize key health needs:

- Size or scope of the issue
- Seriousness of the issue
- Equity impact
- Feasibility

The CHNA Steering Committee identified three final priorities for action:



Needs Not Addressed in the CHNA

Many community residents and stakeholders identified affordable housing as an important health issue, but it was not included in the top three priorities because the feasibility was ranked as “low.” We only have capacity to address three needs. Housing will be addressed as possible through other community initiatives.

Community Input on Prioritized Needs

As part of the community listening sessions, community members were asked to identify what resources were available and strategies to address the identified needs. Facilitators recorded and analyzed the information for use in both the prioritization process and the community health improvement planning process.

KEY FINDINGS: MENTAL WELL-BEING

Mental well-being is a state of well-being in which someone knows their own abilities, can cope with normal stress, can work effectively and is able to contribute to their community.

- 32%-49% of eighth to 11th grade students in Becker County reported feeling down, depressed or hopeless several days, half the days or nearly every day in the past two weeks (the state average is 28%), according to the 2019 Minnesota Student Survey.
- 33% of 11th grade students in Becker County reported that they rarely or only sometimes felt good about their future, the 2019 Minnesota Student Survey found.
- 69% of survey respondents identified mental health as a top-needed service, according to the 2021 Essentia Health West Community Health Survey.

Community Strengths and Resources Available:

- Health care organizations (Essentia Health and Sanford)
- Becker County Public Health
- Mahube/OTWA
- Cornerstone
- School districts
- Becker County 4H
- Lakeland Mental Health
- Stellher Human Services
- United Way
- Lakes Crisis and Resource Center

Community Input:

“Investing in our youth is the most important thing we can do for our community.”

“The impact of COVID on our young people has yet to be measured, and we are seeing the crisis play out in our schools.”

KEY FINDINGS: SUBSTANCE USE DISORDER

Substance use disorders affect people from all walks of life and all age groups. These illnesses are common and many people recover. Substance use disorders occur when the recurrent use of alcohol and/or drugs causes clinically significant impairment, including health problems, disability and failure to meet major responsibilities at work, school or home.

- 57% of 11th grade students in Becker County reported using alcohol or marijuana in the past year, according to the 2019 Minnesota Student Survey.
- 38% of 11th grade students in Frazee-Vergas Schools reported using alcohol in the past 30 days compared to the state average of 23%, the 2019 Minnesota Student Survey found.
- Increasing substance use services was ranked as the second highest need by survey participants, according to the 2021 Essentia Health West Community Health Survey.
- 46% of deaths in Becker County are related to alcohol use compared to the state average of 30%, stated the Robert Wood Johnson Rankings and Roadmaps.

Community Strengths and Resources Available:

- Bureau of Justice Regional Opioid Response Project
- Frazee-Vergas Positive Community Norms Coalition
- Father Project
- Compassion House
- White Earth MOMS and MAT program
- Essentia Health and Sanford
- Becker County Mental Health/Addiction and Public Health

Community Input:

There was a discussion in the listening session on the impact of COVID on substance use rates and the rise in overdoses.

Comments included the importance of supporting youth to reduce substance use: “It’s an economic issue, a social issue and a health issue.”

KEY FINDINGS: CHILDCARE ACCESS

Childcare is a multifaceted health issue. Access to childcare is a fundamental economic driver, promoting employment and financial security. In turn, financial stability supports health and well-being. Childcare is also important for child safety and early childhood development.

- 30% of survey participants rated childcare access in Becker County as “fair” or “poor”, the 2021 Essentia Health West Community Health Survey found.
- There is a shortage of about 700 childcare slots in Becker County, according to the 2020 First Children’s Finance Report.

Community Strengths and Resources Available:

- Acorns to Oaks Consulting
- Becker County Economic Development Authority
- Minnesota Child Care Association
- Early Childhood Initiative
- City and county government
- Chamber of Commerce
- First Children’s Finance
- Health care organizations (Essentia Health and Sanford)
- West Central Initiative
- White Earth Early Childhood
- Laker Prep Early Childhood Center and Preschool
- Mahube/OTWA
- Child Care Aware
- Sourcewell

Community Input:

“If people can’t find childcare, they can’t get to work. We have a workforce crisis that is worsening.”

“I’m losing healthcare providers because they can’t find childcare.”

Homeless Shelter liaison shared that they have supported families who become homeless because they could not work because they couldn’t find childcare

CHNA 2023-2025 IMPLEMENTATION PLAN

Essentia Health worked with internal stakeholders and community partners in the Essentia Health-St. Mary's service area to design strategies that address each of the priority community health needs identified in the CHNA. The strategies outline actions that will be taken to respond to the identified needs.

The resulting implementation plan is a three-year plan to address priority needs in the community and will be reviewed annually, with progress shared with hospital leadership and the board of directors on an annual basis. During the fiscal years 2023-2025 CHNA implementation cycle, some activities are led by the individual hospitals/markets, while others are coordinated across the health system. The Essentia Health system has outlined an allocation of resources available to each hospital as a percentage of net revenue to address the priorities set forth in the Community Health Needs Assessments. This strategy helps Essentia Health make the greatest impact with available resources.

Any comments received during the most recent CHNA implementation cycle inform development of the next implementation plan. No written comments were received from the fiscal years 2020-2022 CHNA for the Detroit Lakes area.

Desired Results and Data Indicators

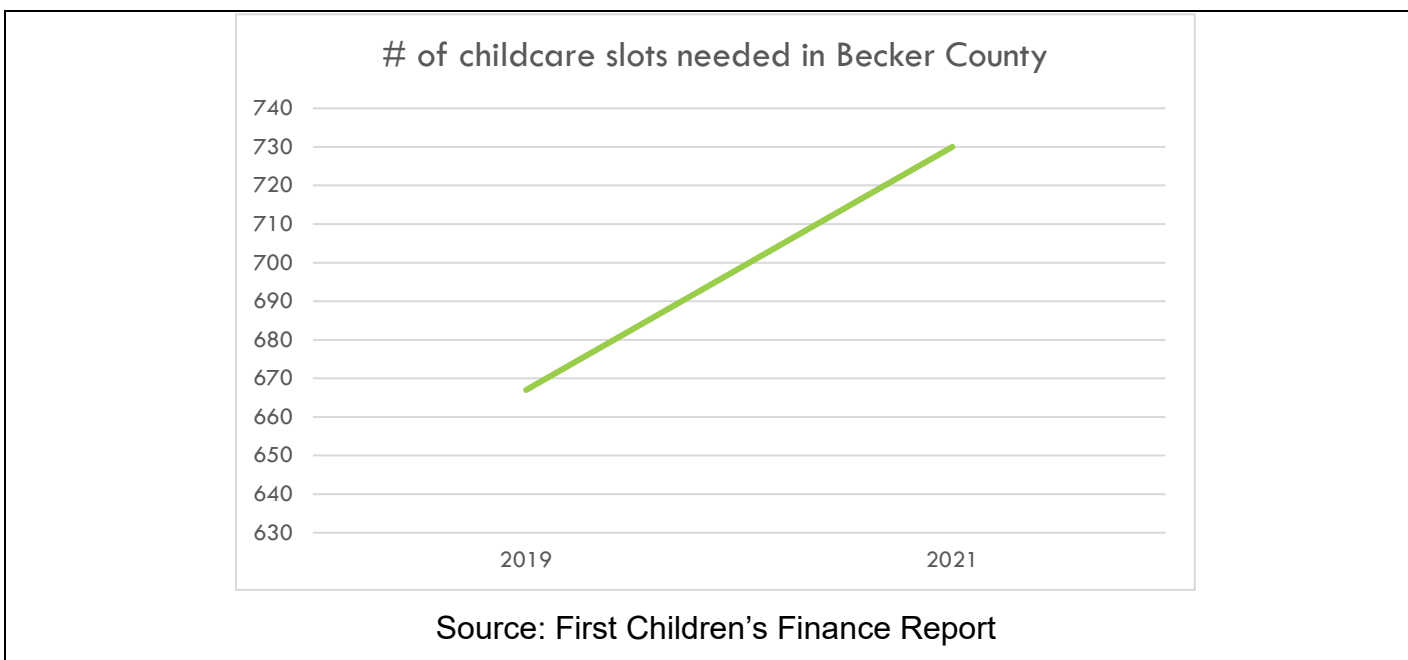
Responding to community health needs identified in the CHNA, the results and indicators listed below outline the desired results of community action and data points to help indicate progress. Essentia Health uses Results-Based Accountability, which is a disciplined way of thinking and acting to improve entrenched and complex social problems, to frame and implement this plan.

- Desired result: People in Becker County will have access to quality childcare.
 - First Children's Finance Report data indicator: Number of childcare slots needed in Becker County
- Desired result: Youth in Becker County will experience positive well-being.
 - Minnesota Student Survey data indicator: Eighth through 11th graders' reporting feeling down, depressed, or hopeless in Becker County
 - Minnesota Student Survey data indicator: Eleventh graders reporting feeling good about their future in Becker County
- Desired result: People in Becker County are free from substance use disorder.
 - Minnesota Student Survey data indicator: Eleventh graders reporting alcohol or other drug use in the past year

Strategies: Health Needs Area

Result: People in Becker County will have access to quality childcare.

Baseline: What is the history and forecast of the issue?



Partners: Who are the partners who have a role to play?

- Becker County Economic Development Authority
- Early Childhood Initiative
- City and county government
- Chamber of Commerce
- First Children's Finance
- Essentia Health and Sanford
- West Central Initiative
- White Earth Early Childhood
- Laker Prep Early Childcare and Preschool
- Mahube/OTWA Community Action
- Child Care Aware
- Sourcewell
- School districts
- Lakes and Prairies Community Action
- Minnesota Department of Employment and Economic Development (DEED)

Story behind the baseline: What are root causes of the issue?

What is currently pushing these numbers down?

- Lack of workforce
- Limited support systems
- Low wages
- Lack of benefits
- Lack of appreciation
- Funding gaps in absence/openings
- Lack of career ladder opportunities
- Lack of awareness

What is currently pushing these numbers up?

- Access to start-up or gap funds
- Access to business professional support
- Access to Mental Health professional services
- Community awareness of the problem

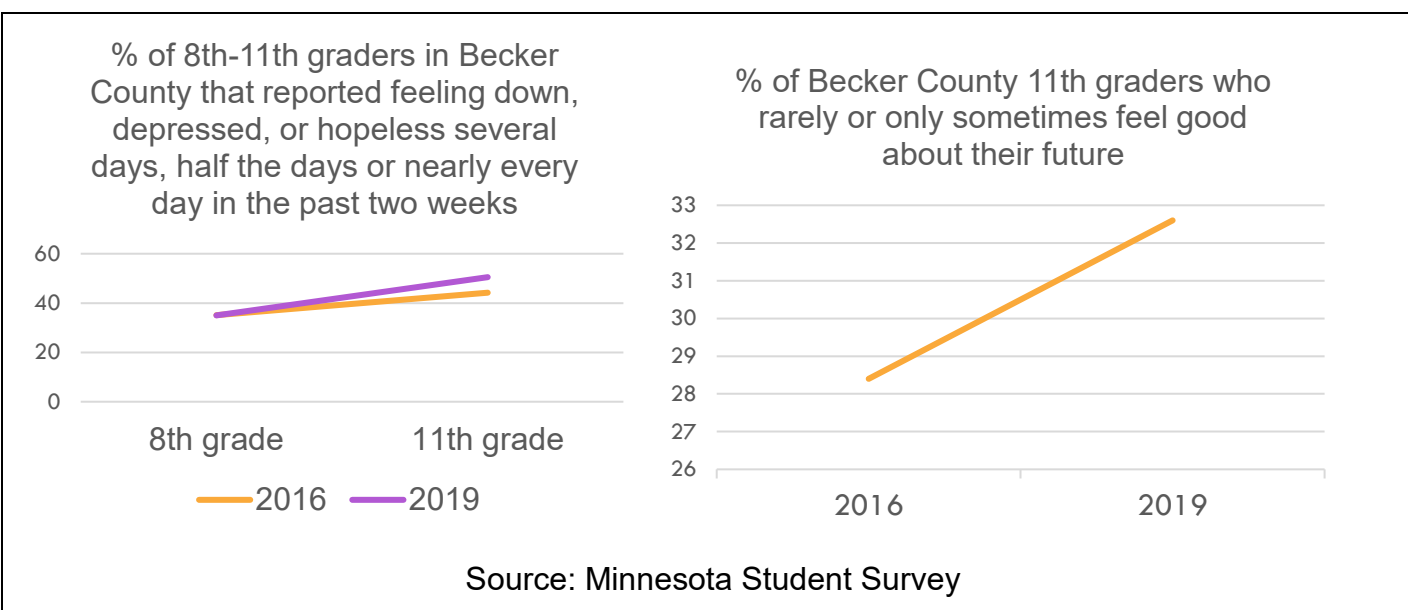
Strategies: What works to do better?

- Support solutions that create new childcare facilities opening in a co-located facility that has space available.
- Support implementation of a childcare workforce career ladder, including the implementation of childcare development associate pathways in schools.
- Support provider recognition efforts to improve awareness and appreciation for childcare providers

Strategies: Youth Mental Well-being

Result: Youth in Becker County experience positive mental well-being.

Baseline: What is the history and forecast of the issue?



Story behind the baseline: What are root causes of the issue?

What is currently pushing these numbers down?

- Expanded youth activity opportunities
- Mentorship programs
- Trauma sensitive and cultural training
- Caring adults in the community
- Giving youth decision-making opportunities
- Policies on bullying
- Policies on diversity, equity and inclusion

What is currently pushing these numbers up?

- Lack of safe spaces to support youth outside of school/home
- Poverty
- Bullying
- Social media/technology and the influence on self-image
- COVID-19's impact of isolation and change in schools
- Pressure to be successful is too much
- Lack of opportunities that match student interests

Partners: Who are the partners who have a role to play?

- Essentia Health and Sanford
- Becker County Public Health
- Mahube/OTWA
- CornerStone Community and Youth Center
- School districts
- Becker County 4-H
- Lakeland Mental Health
- Stellher Human Services
- United Way
- Lakes Crisis and Resource Center
- University of Minnesota Extension
- Becker County Children's Initiative
- Boys and Girls Club

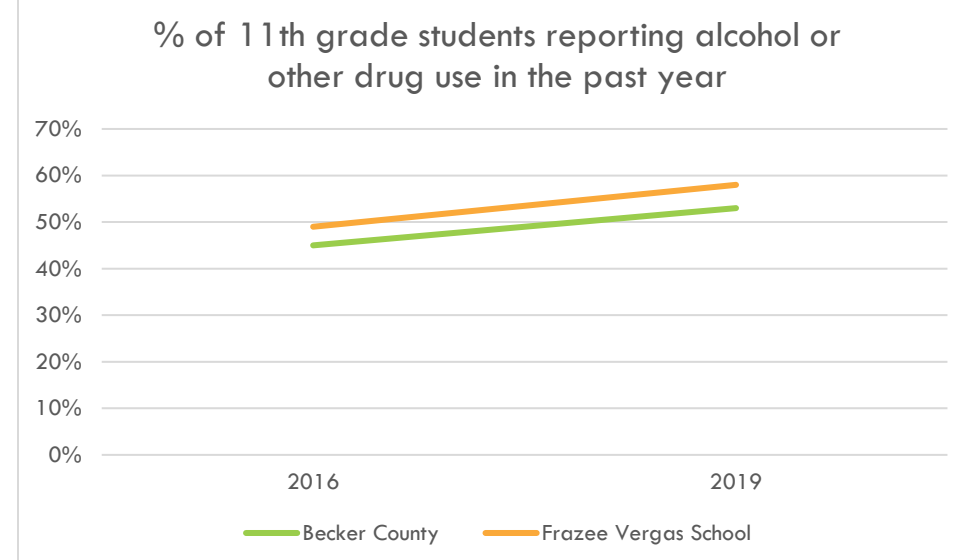
Strategies: What works to do better?

- Support the CornerStone Community and Youth Center to provide a safe place, support youth decision-making, expand programs and engage caring adults with youth in the community.
- Support the Positive Community Norms grant project in Frazee-Vergas schools to engage community and youth to expand positive messaging, activities and promote healthy environments.

Strategies: Substance Use

Result: People in Becker County are free from substance use disorder.

Baseline: What is the history and forecast of the issue?



Source: Minnesota Student Survey

Story behind the baseline: What are root causes of the issue?

What is currently pushing these numbers down?

- Expansion of harm reduction services
- Prevention programs in schools
- Medications for opioid use disorder (MOUD) expansion
- Youth activities and opportunities that keep children and teens engaged
- Normalization of sobriety and recovery

What is currently pushing these numbers up?

- Poverty
- Trauma
- Systemic racism
- Access to substances
- Gateway drug exposure
- Peer pressure & stress
- Normalization of using

Partners: Who are the partners who have a role to play?

- Bureau of Justice Regional Opioid Response Project
- Frazee-Vergas Positive Community Norms Coalition
- Father Project
- Compassion House and Daystar
- White Earth MOMS and MAT Program
- Essentia Health and Sanford
- Becker County Mental Health/Addiction and Public Health
- School districts
- Sheriff's Offices
- City police departments
- The Lotus Center
- Stellher Human Services

Strategies: What works to do better?

- Support the youth positive community norms grant in Frazee-Vergas Schools to engage youth in positive messaging about norms of not using, and to identify and implement strategies to reduce use.
- Improve data collection and reporting through the use of Overdose Detection Mapping Application Program (ODMAP)
- Increase public knowledge of opioids and substance use disorder and resources available.
- Expand access to recovery support services.
- Expand access to harm reduction services and supplies.

CONCLUSION

As a nonprofit health system, Essentia Health is called to make a healthy difference in people's lives. This CHNA illustrates the importance of collaboration between our hospitals and community partners. By working collaboratively, we can have a positive impact on the identified health needs in our community in fiscal years 2022–2024. For questions or comments about the community health needs assessment, please contact: chna.comments@essentiahealth.org. Copies of this plan can be downloaded from our website: <https://www.essentiahealth.org/about/chna/>.

APPENDIX A: CHNA PARTNER INVENTORY

Organization	Representing medically underserved, low income, or minority community	Representing state, local, tribal or governmental public health	Advisory Committee member	Focus group participant
Becker County 4H				X
Becker County Economic Development	X		X	X
Becker County Public Health Department	X	X	X	X
Becker County and White Earth Mobile Mental Health Crisis	X			X
Boys and Girls Club of Detroit Lakes	X			X
Child Care Aware	X			X
Detroit Lakes Community and Cultural Center				X
Early Childhood Initiative	X			X
Father Project	X	X		X
First Children's Finance				X
First Lutheran Church	X		X	X
Harvest Church	X			X
Laker Prep				X
Lakes Crisis and Resource Center	X		X	X
Land of the Dancing Sky Area Agency on Aging	X			X
Mahube/OTWA	X	X	X	X
MState Community and Tech College				X
Partnership 4 Health	X	X	X	X

Public Schools (Detroit Lakes, Frazee, Lake Park/Audubon)	x			x
Sanford	x	x	x	x
Stellher Human Services			x	x
United Way	x			x
University of MN Extension				x
West Central Initiative	x			x
White Earth Childcare	x			x
White Earth Tribal Services	x	x		x



Essentia Health

[EssentiaHealth.org](https://www.essentiahealth.org)